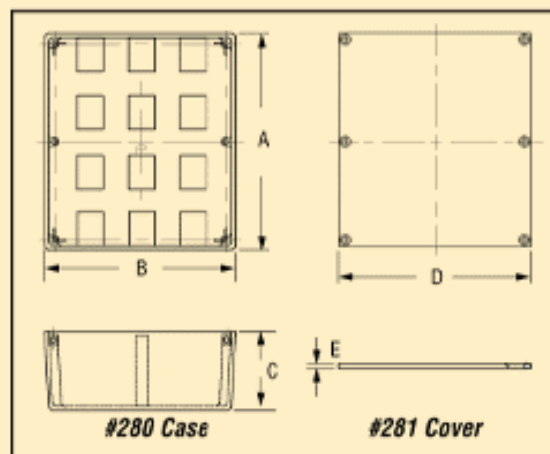
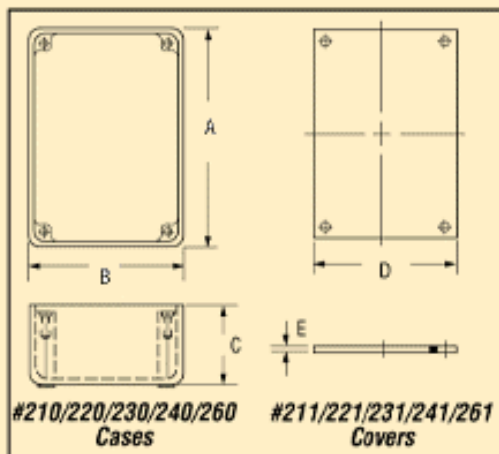
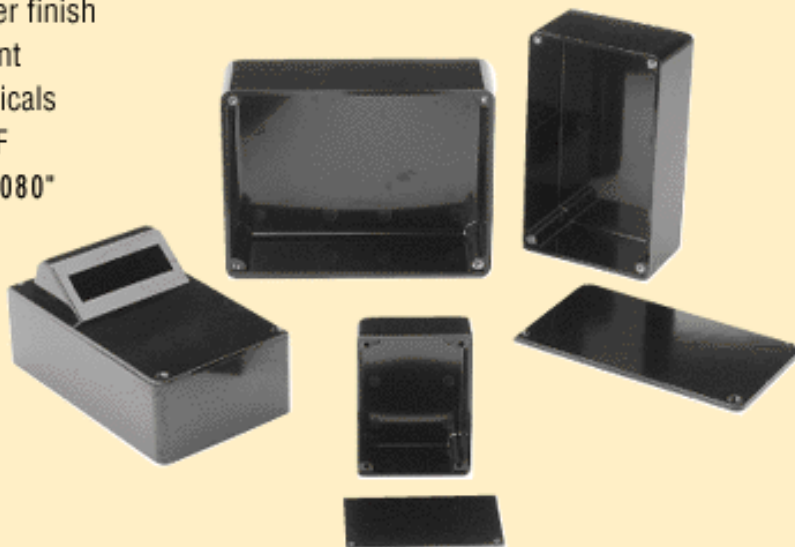


PHENOLIC Instrument

- Glossy black - high luster finish
- Mar and scratch resistant
- Resistant to most chemicals
- Heat resistant to 475 °F
- Typical wall thickness: .080"



Case Dimensions

Part No.	Outside Dimensions			Case Mounting Holes x Depth	Hardware*
	"A" Length	"B" Width	"C" Depth		
210A	3 1/2"	2 1/2"	1 1/4"	4-40 x 5/16" --TH(4)	4-40 x 1/2" Screw
220	4"	2 7/8"	1 9/16"	4-36 x 5/16" --TH(4)	4-36 x 1/2" Screw
220A	4"	2 7/8"	1 9/16"	4-40 x 5/16" --TH(4)	4-40 x 1/2" Screw
220B	4"	2 7/8"	1 9/16"	.099 x 7/16" --PH(4)	1/2" #4 Self Tap
230	5"	4 1/4"	1 3/4"	.009 x 7/16" --PH(4)	1/2" #4 Self Tap
230A	5"	4 1/4"	1 3/4"	6-32 x 5/16" --TI(4)	6-32 3/8" Screw
240	6 1/4"	3 3/4"	2"	.113 x 1/2" --PH(4)	1/2" #6 Self Tap
240B	6 1/4"	3 3/4"	2"	6-32 x 5/16" --TI(4)	6-32 x 3/8" Screw
260	6 13/16"	5 9/32"	2 5/16"	.089 x 1/2" --PH(4)	1/2"#4 Self Tap
260K	6 13/16"	5 9/32"	2 5/16"	6-32 x 5/16" --TI(4)	6-32 x 3/8" Screw
280	8 7/16"	7 7/16"	3 1/64"	6-32 x 1/4" --TI(6)	6-32 x 3/8" Screw
* Hardware Not Included				PH--Plain Hole, TH--Threaded Hole, TI--Threaded Insert(Brass)	

Cover Dimensions

Part No.	Outside Dim.		Case No.
	"D" Width	"E" Depth	
211	2 19/64"	1/16"	210A
221	2 17/64"	1/16"	220/220A/220B
231	4	1/16"	230/230A
241+	3 47/64"	1/4"	240/240B
261+	5 17/64"	1/4"	260/260K
281+	7 7/64"	1/8"	280
+Counter Sunk Holes			

« back • next »